



SPECIFICATIONS

RATING MIN/MAX: 0.1mA-100mA, 20VDC-32VDC
MAX POWER: 1.0VA
CONTACT RESISTANCE: 150mΩ MAX
INSULATION RESISTANCE: 100MΩ min,500VDC
DIELECTRIC STRENGTH: 250VAC for 1 Minute
OPERATING LIFE: 25,000 cycles
OPERATING TEMPERATURE: -40°C~85°C at 96% RH Max
OPERATING FORCE: 400±120gf
TOTAL TRAVELS: 2.4mm±0.3

MATERIALS

CASE: LCP
ACTUATOR: Polycarbonate
SPACER: Silicon
CONTACT / TERMINALS: Silver plate stainless /Gold plated brass



PSD
Pushbutton Switches

HOW TO ORDER

MODEL NO. **LED COLOR** **MAINTAIN**

□ □ □ □ □ □ □ □ □

Model No. LED color Maintain

PTCT Standard
PTCTA Car

ITEM NO	COLOR
00	Without LED
01	White
03	Red
06	Green
07	Blue
0A	Amber
DUAL COLOR LED	
36	Red&Green
56	Yellow&Green
7A	Blue&Amber

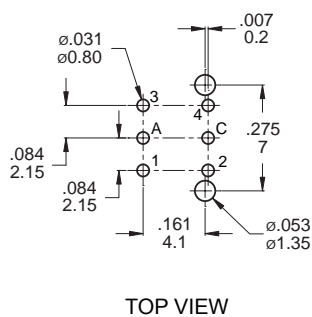
12 Put on black CAP
02 Transparent lamp change to black lamp (Non-LED)

A Cat the pin 3 terminal
 Connection cut off

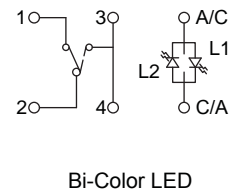
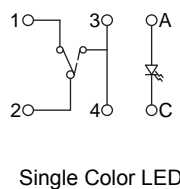
B Cat the pin 4 terminal
 Connection cut off

P.C.B MOUNTING / CIRCUIT

P.C.B. LAYOUT

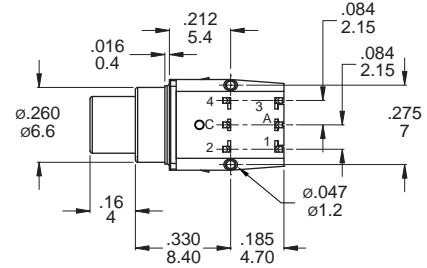
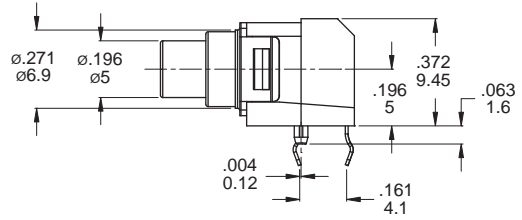
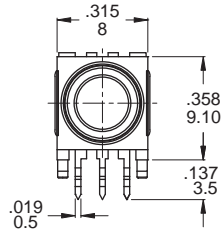


CIRCUIT



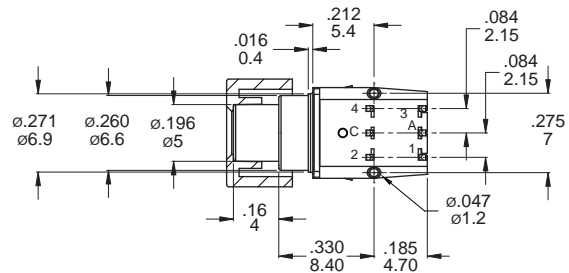
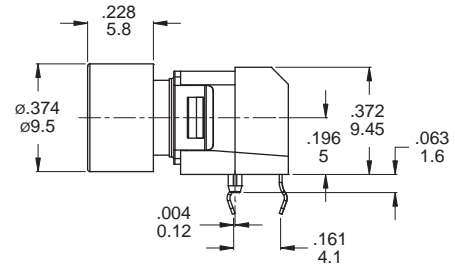
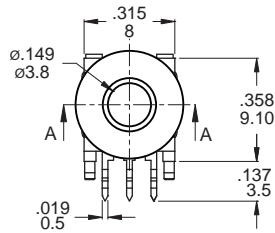
PTCT Series

DIP PUSH SWITCH



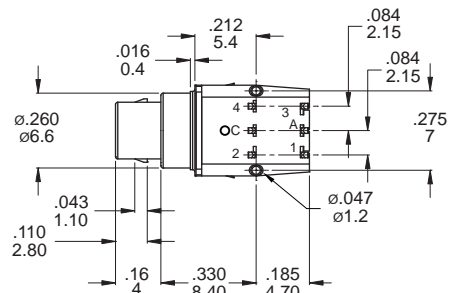
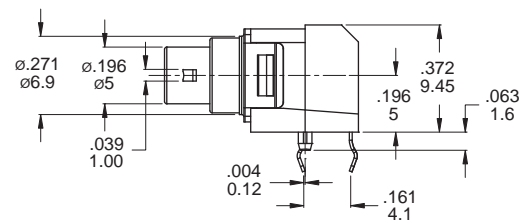
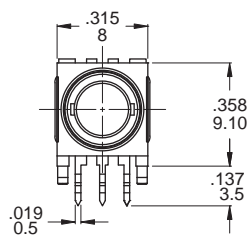
Part No. Shown : PTCT-□□

PTCT
Pushbutton Switches



SECTION A-A

Part No. Shown : PTCT-□□-12



Part No. Shown : PTCTA-□□

