

Recommended hole size

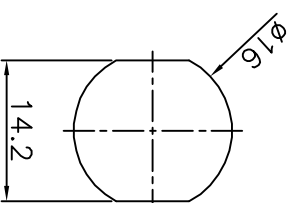
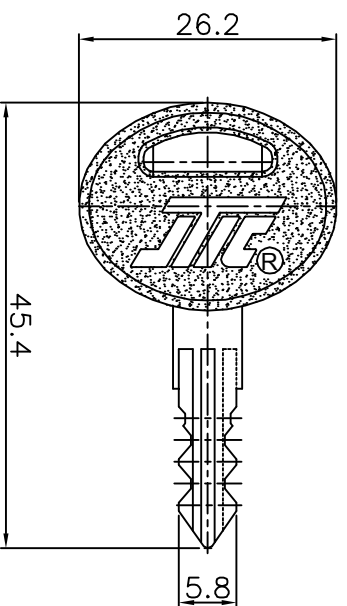
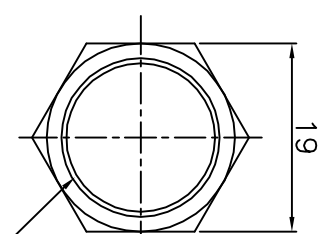
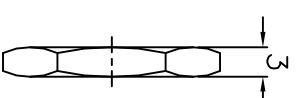
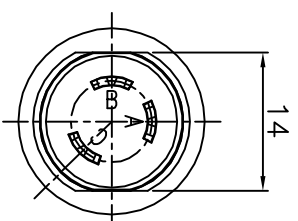
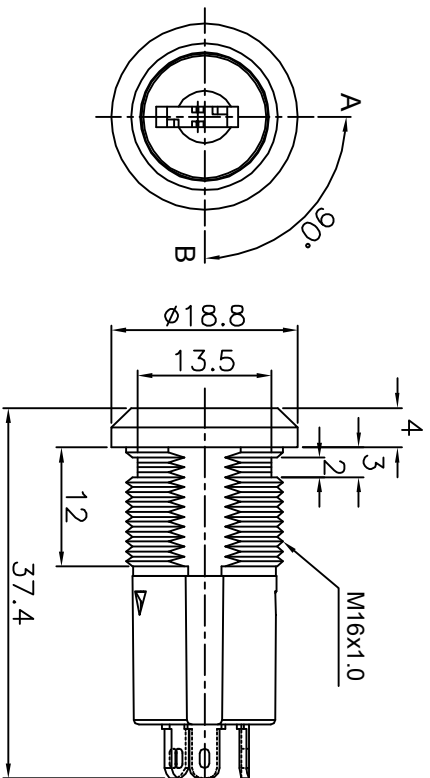
Notes:

- * Zinc alloy die cast housing and cylinder.
- * Bright chrome plated standard.
- * 5 disc tumbler mechanism.
- * Brass keys, nickel plated, with plastic cover.
- * Key can withdrawn in two positions.
- * Golden plated contacts and terminals.
- * S3012 2 Position(off-on) 2 Terminals.
- * Hex nut mounted.
- * All keyed alike #101 or 20 Combinations standard.
- * Contact Rating : 3A 125VAC , 2A 250AC

REV. NO.	COORDINATES	WAS	NEW	DATE	B)
1

DATE	02.14.14	SCALE	2:1	UNIT	mm	WT. :	g	REV.:	B	DESCRIPTION	KEY LOCK SWITCH
TOLERANCES	1.01	APPROVED BY		CHECKED BY		DRAWN BY				PART NO.	S3012-2
1.02										MATERIAL	.
1.03										NOTE	
1.04											
1.05											
1.06											
1.07											
1.08											
1.09											
1.10											
1.11											
1.12											

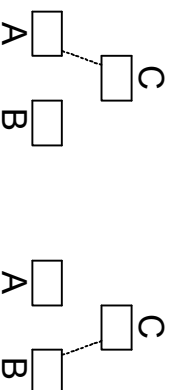




Recommended hole size

A POSITION






B POSITION



Notes:

- * Zinc alloy die cast housing and cylinder. chrome plated.
- * 5 disc tumblers mechanism.
- * Reversible double-bitted brass keys. nickel plated, with plastic cover.
- * Gold plated contacts and terminals in 1 micro.
- * 2 Positions(on-on) 3 Terminals(1AC. 1BC)
- * All keyed alike or 20 Combinations available.
- * Contact Rating : 3A 125VAC , 2A 250VAC
- * ROHS compliance.



DATE	02.17.14	SCALE	2:1	UNIT	mm	WT. :	g	REV.:	A		DESCRIPTION	KEY LOCK SWITCH									
<div>TOLERANCES</div> <div><div>0.1</div><div>0.2</div><div>0.3</div><div>0.5</div><div>0.8</div><div>1.2</div><div>2.0</div><div>3.0</div><div>5.0</div><div>10.00</div></div>											APPROVED BY		CHECKED BY		DRAWN BY		PART NO.	S3013-2			
											MATERIAL	.									
											NOTE										

TOLERANCES	0.1	0.2	0.3	0.5	1.0	1.2
FINISHES	100	200	300	400	500	600



REV. NO.	COORDINATES	WAS	NEW	DATE	BY
1					